



Park Mead, Harlow, CM20 1RJ

Set in a cul-de-sac location right in the heart of the Town Centre, a two-bedroom terraced family home with a good-sized garden. The property is just down the road from the Princess Alexandra Hospital, within easy reach of the Town Centre, Town Park, and train station.

The property itself enjoys an entrance porch leading onto the entrance hallway, and office or possible small Bedroom 3, front to back lounge diner, fitted kitchen, two double bedrooms and a family bathroom. Gas radiator central heating via Combi boiler. The property is offered with no onward chain.

Price £300,000

Park Mead, Harlow, CM20 1RJ



- Two Bedroom Terraced Home
- Two Double Bedrooms
- Good Sized Rear Garden
- Primary & Secondary Schooling Close By
- Town Centre Location
- Family Bathroom
- Cul- Sac-Location
- Walking Distance of Hospital, Town Centre & Harlow Town Station
- Front to Back Lounge Diner
- Gas Radiator Central Heating

Accommodation Comprises:

Entrance Hall

7'7 x 3'5 (2.31m x 1.04m)

Office

7'9 x 3'5 (2.36m x 1.04m)

Hallway

8'2 x 3'0 (2.49m x 0.91m)

Kitchen

10'9 x 7'5 (3.28m x 2.26m)

Living Room

19'4 x 9'10 (5.89m x 3.00m)

First Floor Landing

2'1 x 7'7 (0.64m x 2.31m)

Bedroom One

8'7 x 13'0 (2.62m x 3.96m)

Bedroom Two

10'6 x 9'10 (3.20m x 3.00m)

Bathroom

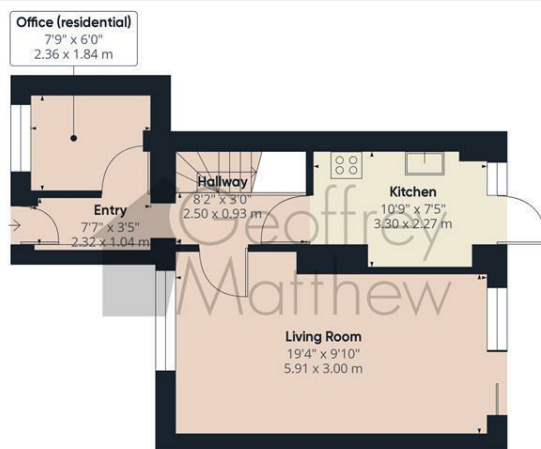
5'8 x 7'7 (1.73m x 2.31m)



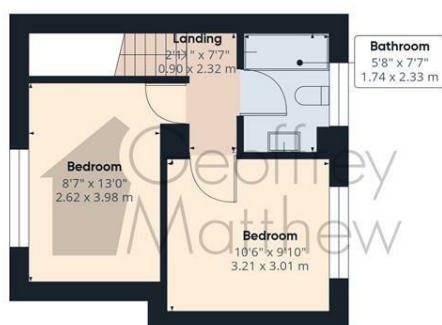
Directions



Floor Plan



Floor 0



Floor 1



Geoffrey
Matthew

Approximate total area^m
693.63 ft²
64.44 m²

(1) Excluding balconies and terraces

While every attempt has been made to ensure accuracy, all measurements are approximate, not to scale. This floor plan is for illustrative purposes only.

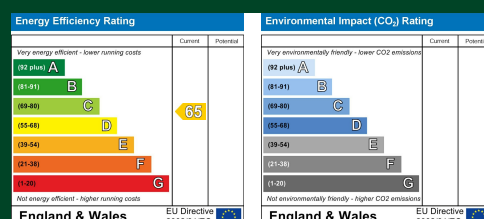
Calculations are based on RICS IPMS 3C standard

GIRAFFE360

Council Tax Details

Harlow Council Band C

These particulars, whilst believed to be accurate are set out as a general outline only for guidance and do not constitute any part of an offer or contract. Intending purchasers should not rely on them as statements of representation of fact, but must satisfy themselves by inspection or otherwise as to their accuracy. No person in this firm's employment has the authority to make or give any representation or warranty in respect of the property.



Old Harlow: 01279 444988 Email: harlow@geoffreymatthew.co.uk
Great Ashby: 01438 740111 Email: greatashby@geoffreymatthew.co.uk